

PRESS RELEASE

2022.9.22

Passport to Shangri-La

October 22nd (Sat) ,2022 – January 29th (Sun),2023

The Museum of Modern Art, Saitama

■ Exhibition Overview

Shangri-La is a land of ideals and peace derived from the story, *The Peach Blossom Spring*, written by the Chinese poet Tao Yuanming. In *The Peach Blossom Spring*, a fisherman living in Wuling rows his boat and reaches a shangri-la deep in the forest. It was a beautiful world of serene tranquility, sequestered from the common earthly world.

To appreciate works of art from all ages and places is to experience time and space far removed from where we stand. If there is a "shangri-la" deep within reality, free from time and space of the present moment, then a work of art is like a "passport" to open the door to that "shangri-la"—like imagining the invisible through the chasm between the everyday and the extraordinary, or experiencing another world. When we wish to move freely between various time and space, works of art offer us many suggestions.

Passport to Shangri-La is an exhibition that explores the appeal of artworks that transcend time and space through the convergence of works from diverse periods and genres with the collection of the Museum of Modern Art, Saitama. The centerpiece of the exhibition is the space that is created by the encounter between the museum's collection and the works of the six artists, who, through the use of painting, photography, drawing, installation, and other techniques delicately capture the latent phenomena that lie within the interstices of everyday life and reality. The exhibition, configured from various angles including comparisons between artists and works, thematic contrasts, and unexpected combinations, will shed a new light on the collection, as well as provide an opportunity to witness artists from a wide range of generations at their current standpoint.

*The title of the exhibition, *Passport to Shangri-La*, is taken from a work of exhibiting artist, Chie Matsui.

■ Highlights of the Exhibition

1. Contemporary Artists x MOMAS Collection! Six artists from different generations and genres will exhibit their new and recent works, which will be combined with the museum's collection to create the exhibition space. The configuration of the venue by the contemporary artists is a major highlight of this exhibition.
2. In between the six artists' sections, we will explore the appeal of art that transcend time and space by introducing works of art from early modern paintings based on the theme of shangri-las to contemporary art, centering on our collection including borrowed works that take us into various realms of time and space.
3. Related events such as artist talks by exhibiting artists and a variety of guests are scheduled to be held during the exhibition period. Details will be posted on the museum's website.

■ Exhibition Info

Passport to Shangri-La

Period

October 22nd (Sat),2022 – January 29th (Sun),2023

There will be some changes in pieces on display.

First Half: until December 4th (Sun) / Second Half: from December 6th (Tue)

Days Closed

Mondays (except November 14th, and January 9th) , December 26th (Mon) – January 3rd (Tue)

Opening hours

From 10:00 - 17:30 (Last admission at 17:00)

Admission

Adult: 1,200 yen (960 yen)

University and High school students: 960 yen (770 yen)

*Prices in brackets are for groups of 20 or more.

*Admission of junior high school students and younger, and those with a disability certificate (including one attendant) are free of charge.

*You can also visit the MOMAS Collection (Exhibition Room on the first floor).

Organizer

The Museum of Modern Art, Saitama

Cooperation

JR East Omiya Branch, FM NACK5 ,Urawa PARCO

Grant support

Japan Arts Council

■ Venue/Access

The Museum of Modern Art, Saitama

9-30-1, Tokiwa, Urawa-ku, Saitama-shi, Saitama 330-0061, Japan

Tel: 048-824-0111 Fax: 048-824-0119

<https://pref.spec.ed.jp/momas/>

The museum is located inside Kita-Urawa Park, a 3-minute walk from the West Exit of Kita-Urawa Station on the JR Keihin-Tohoku Line.

JR Kita-Urawa Station is approximately 35 minutes by train from JR Tokyo or JR Shinjuku Station.

Parking is not available at the museum. Please use the coin-operated parking lot named “Mitsui Repark, the Museum of Modern Art, Saitama East,” which can be used at a reduced price (300 yen off for special exhibitions and 100 yen off for the MOMAS Collection). Please contact us prior to your visit if you are planning on coming by chartered bus. Persons with disabilities can use our business-use parking space. However, space is limited.

■ Exhibiting Artists x MOMAS Collection

This exhibition combines six contemporary artists with works from the museum's collection. The combination and profiles of the contemporary artists are as follows.

Miyuki Inagaki x Tetsuro Komai

Miyuki Inagaki | Born in 1989 in Kanagawa Prefecture. Received a Ph.D. from Tokyo University of the Arts. By using gardens, vacant lots, and dwellings as motifs, she studies the images that emerge from the interactive relationship between land, landscape, and individuals, and reconstructs them through paintings and installations. Recent exhibitions include *Spirare* (2022, Gallery Gigi), *Subsong* (2021, CLEAR GALLERY TOKYO) and *Para-Landscape Imagination to Face Changing Reality* (2019, Mie Prefectural Art Museum/group exhibition), among others.

Yoichi Sano x Toyosaku Saito

Yoichi Sano | Born in 1970 in Tokyo. Graduated from Tokyo Zokei University and completed a research course. Utilizing the principles of the pinhole camera, he creates photographic works that capture the ever-changing and flickering expressions of light on subjects such as mountains, lakesides, ponds, sunlight filtering through trees, and greenhouses. Recent exhibitions include *Kiri no Kodama II* (2022, GALLERY TAGA2), *Peripatetic* (2014, switch point), “*Moment, stop.*”-“*Because you are so beautiful*” (2015, Bunkyo City Mori Ogai Memorial Museum/group exhibition), among others.

Yuichi Higashionna x Man Ray and others

Yuichi Higashionna | Born in 1951 in Tokyo. Through the use of various media and techniques, such as LED and fluorescent light objects, spray painting, and animation, he expresses the sense of oddness that is in everyday interiors and items in a multilayered manner. Recent exhibitions include *Large Interior* (2021, void+), *OAA #2* (2020, KOCA) and *Play Double* (2022, heimlichkeit Nikai/two-person exhibition), among others.

Yukari Bunya x Kishio Suga

Yukari Bunya | Born in 1985 in Okayama Prefecture. Received a M.F.A from Tokyo University of the Arts. Began making drawings while majoring in music composition at Aichi University of the Arts. Using pen, pencil, and carbon paper, she improvises various types of lines to create a physical space on paper. Recent exhibitions include *Yukari Bunya Exhibition* (2021, Art Space & Cafe Barrack), *Trans/Real: The Potential of Intangible Art vol.6 Yukari Bunya* (2016, Gallery αM), *ON - Between objects and bodies, from various "ON"s* (2022, Kiyosu City Haruhi Museum of Art/group exhibition), among others.

Chie Matsui x Kansetu Hashimoto

Chie Matsui | Born in 1960 in Osaka Prefecture. Completed a master's course at Kyoto City University of Fine Arts. Works with a broad range of media, such as photography, video and drawing to create installations that evoke a poetic story. She posts a photo every night on SNS (Instagram, Facebook) under the title "Ichimai san." Recent exhibitions include *This Year's "Pictures" and Their Friends* (2021, MEM), *DOGGO ONSENART 2018 Hotel Project "Shorenmaru Nishi-he"* (2018, Sachiya Ryokan) and *Kansai Contemporary Art of the 1980s* (2022, Hyogo Prefectural Museum of Art/group exhibition), among others.

Yoko Matsumoto x Shunso Hishida and others

Yoko Matsumoto | Born in 1936 in Tokyo. Graduated from Tokyo University of the Arts. During her stay in the U.S. from 1967 to the following year, she encountered acrylic paint, and upon her return to Japan, began to create works in earnest. From the 1980s to the 1990s, she established her own unique abstract paintings using pink as the predominant tone. Since 2005, she has been working with oil again. Recent exhibitions include *Nettai* (2021, Nihombashi Takashimaya Art Gallery X), *The Light: Yoko Matsumoto/Rika Noguchi* (2009, The National Art Center, Tokyo/two-person exhibition), *Monet's Legacy* (2018, Yokohama Museum of Art and Nagoya City Art Museum/group exhibition), among others.

■ Related events

Museum College 2022 "Transit: A Proposal for New Threshold Studies"

This exhibition is an open lecture co-sponsored by the Faculty of Liberal Arts, Saitama University and the Museum of Modern Art, Saitama.

15:00-16:30 each day (doors open at 14:30)/Auditorium on the 2nd floor/Capacity: 60 people (on a first-come- first-served basis)/Fee: Free

① Nov. 19 (Sat) Contemporary Artists x Collections—Special Exhibition "Passport to Shangri-la"

Haruka Shigihara (Curator of the museum)

② Dec. 3 (Sat) Kabuki and Women—the Achievements of Nakamura Nakazo I's Mother Oshun

Tove Johanna Björk (Professor, Saitama University Graduate School of Humanities and Social Sciences)

③ Dec. 10 (Sat) Basic Issues in the Philosophy of Lao-tse and Chuang-tse—Focusing on Political Thought

Hisashi Nishiyama (Associate Professor, Saitama University Graduate School of Humanities and Social Sciences)

④ Dec. 18 (Sun) Contemporary American Amish Living on the Boundaries

Nao Nomura (Associate Professor, Saitama University Graduate School of Humanities and Social Sciences)

Inquiries: Saitama University General Affairs Department, Public Relations Division "Museum College Section" Tel: 048-858-9213

* In addition, we plan to hold related events such as artist talks by exhibiting artists.

Details will be announced on the museum's website.

■ Slide Talk Information

We will guide you through the highlights of the exhibition through a slide presentation for your group on demand (reservation required).

For inquiries and reservations, please contact the department of Education and Public Relations (048-824-0110).

■ Concurrent exhibition

MOMAS Collection

2nd Term: September 3rd (Sat) – November 27th (Sun), 2022

“Selection” / “Recent Acquisitions” / “Waiting for the Moon—Night Views in Japanese-style Paintings”

3rd Term: December 3rd (Sat) – February 26th (Sun), 2023

“Selection” / “Round and Around”

■ Regarding Measures to Prevent Spread of COVID-19

We ask for your understanding and cooperation regarding measures for preventing the spread of COVID-19.

Depending on the circumstances, the museum may be closed, or the exhibition period may be changed. Please check the latest information on our website before visiting.

■ Contact Us

Exhibition staff: Shigihara, Yoshioka, Shinohara / Inquiries regarding public relations & images: Manaka

Tel: 048-824-0111 (Main number) / 048-824-0110 (Curatorial Division) Fax: 048-824-0118

Press Conference

October 22th (Sat) 2022, 5:30 p.m. – (Admission from 5:00 p.m.)

At the above date and time, we will hold a press conference.

If you would like to attend, please apply via email to kouhou@aria.ocn.ne.jp (Manaka, Head of Public Relations). Please state your company name, your name, the number of press staff members, and whether or not you will have a TV camera.

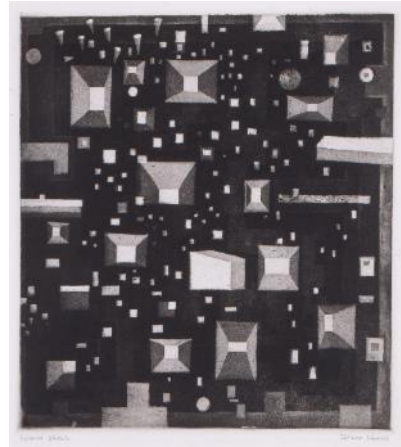
■ PR Images

- Please contact the museum regarding the provision of images. The museum will provide the images as data. Please send your request by e-mail to kouhou@aria.ocn.ne.jp (Public Relations Manager, Manaka).
- Please include captions when posting images. Also, please do not trim the part of the image showing the artwork or put text on it.
- If you would like to publish an image, please send one copy of the publication to the Public Relations Manager.
- The image of "2. Tetsuro Komai, *Labyrinth of Time*, 1952" will be available for use until the end of the exhibition (January 29, 2023). If you publish this image on any web media, please delete this image from the web media after the exhibition.

Catalog of PR



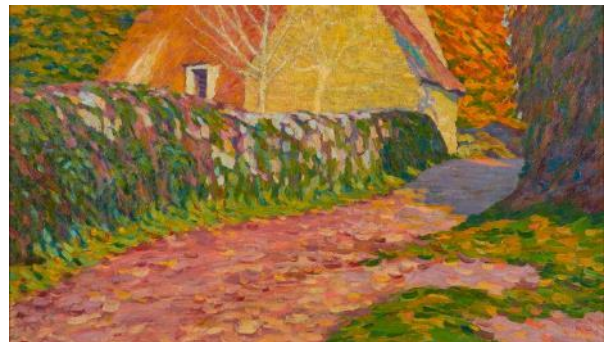
1.



2.



3.



4.



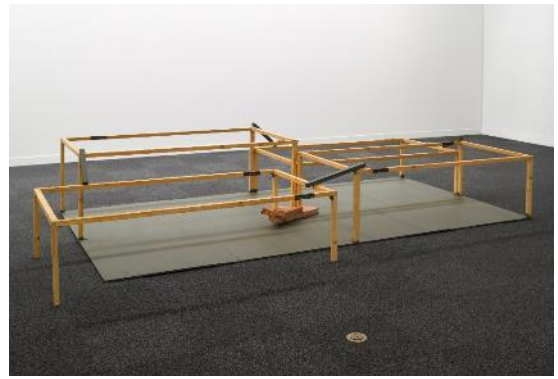
5.



6.



7.



8.



9.



10.



11.



12.

■ Captions

1. Miyuki Inagaki, *Largo*, 2020, from the artist's collection.
2. Tetsuro Komai, *Labyrinth of Time*, 1952, from the collection of the Museum of Modern Art, Saitama ©Yoshiko Komai 2022/JAA2200110
3. Yoichi Sano, *flow*, 2015-17, from the artist's collection
4. Toyosaku Saito, *French Landscape II*, c.1910, from the collection of The Museum of Modern Art, Saitama
5. Yuichi Higashionna, *Large Interior*, venue view (void+, 2021) Photo by Masatoshi Mori, Courtesy: void+
6. Man Ray, *Rayograph*, c.1921-22 (1963 print), from the collection of The Museum of Modern Art, Saitama
(print medium) ©MAN RAY 2015 TRUST/ADAGP, Paris & JASPAR, Tokyo, 2022 X0085
(web medium) ©MAN RAY 2015 TRUST/ADAGP, Paris & JASPAR, Tokyo, 2022 X0089
7. Yukari Bunya, *drawing 2022.6.25*, 2022, from the artist's collection Photo by ToLoLo studio
8. Kishio Suga, *Collection of Four Enclosures*, 1994, from the collection of The Museum of Modern Art, Saitama
9. Chie Matsui, *Shorenmaru Nishi-he*, (a part), 2018, from the artist's collection ©Chie Matsui, Courtesy of MEM
10. Kansetsu Hashimoto, *Scenery in Spring and Autumn*, year unknown, from the collection of the Museum of Modern Art, Saitama (exhibition period Oct. 22- Dec. 4, 2022)
11. Yoko Matsumoto, *Dark Rock*, 1990, from the collection of the Museum of Contemporary Art, Tokyo
12. Shunso Hishida, *Fishing Boat on the Lake*, 1900, from the collection of the Museum of Modern Art, Saitama (exhibition period Dec. 6, 2022-Jan. 29, 2023)

* 2. If you post images from Tetsuro Komai on any web media, please delete the image from the web media after the exhibition ends (January 29, 2023).

* 6. Man Ray has different credit notations depending on the medium (print medium or web medium) where the image is posted.

* 10. Kansetsu Hashimoto and 12. Shunso Hishida will be exhibited for half of the period of the exhibition.

* Please contact us if you would like images of any other works.